

# Module Overview

The **Ironbark Production Management / Production Planning & Material Requirements** module interfaces with the Ironbark Bill of Materials, Job Costing and Payroll modules.

Ironbark Production Management allows you to set-up routings from one shop, stage or job area to another.

## Industries

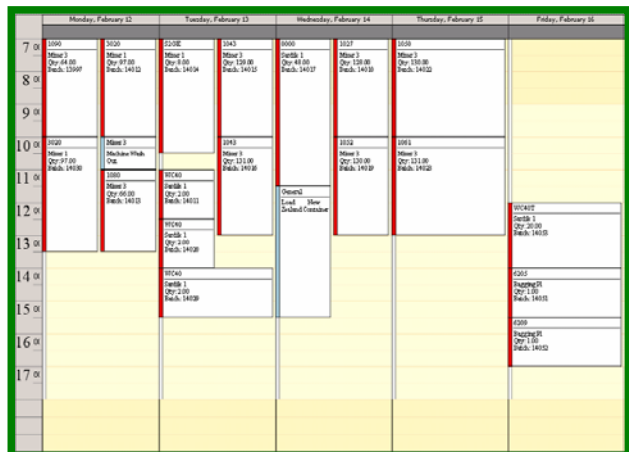
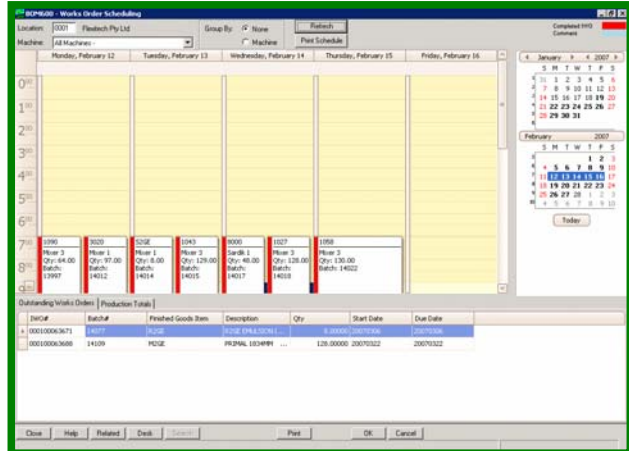
- Fresh Produce
- Fuel Distribution
- Project Management
- Timber
- Manufacturing
- Building & Construction
- Wholesale Distribution

## Main Features

- When timesheets are completed in Job Costing or Payroll, the information is integrated with production planning so that the amount of time spent on a particular job, at a particular stage, is recorded and can be further analysed. As well, the progress of the job can be tracked.
- A works order can be produced, showing routings. Machine set-up times and unit costs can be analysed.
- Works orders can be scheduled on a time basis, per day, by machine.
- Works orders can be closed via the schedule which automatically updates Stock, Job and General Ledger.

## Reporting

- Production Scheduling Report
- Works Orders and Production Sheet Report
- Material Requirements Report
- Outstanding Works Orders Report



Full Service Provider  
Proven Solutions  
Committed to R & D  
Significant and Varied  
Customer Base